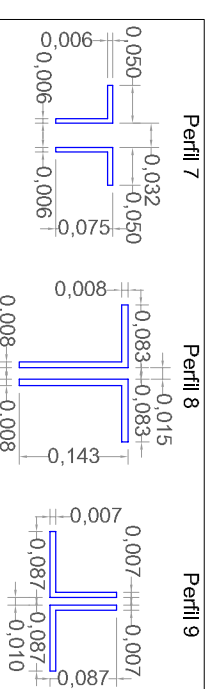
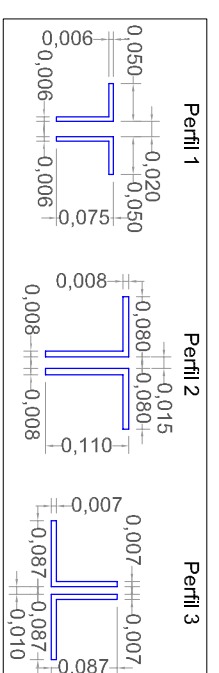


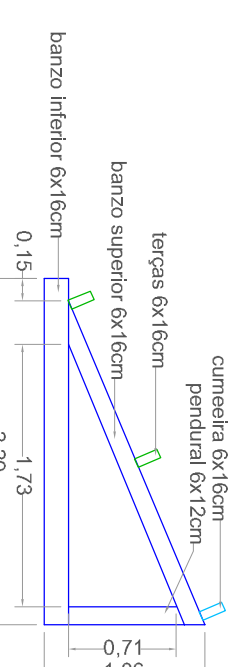
PARTE 2
CUMEEIRAS, TESOURAS E TERÇAS
ESCALA - 1:100



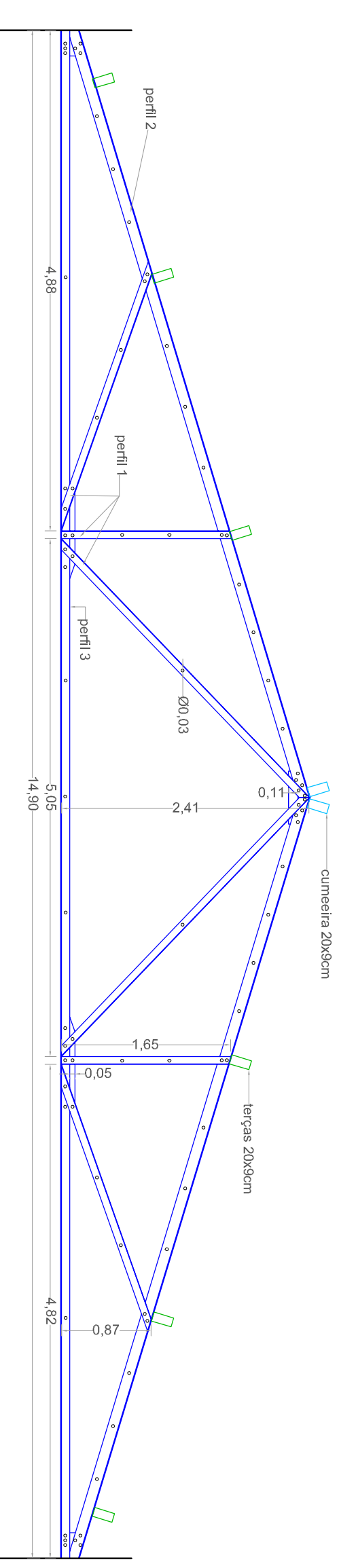
PERFIS TESOURA T12
ESCALA - 1:5



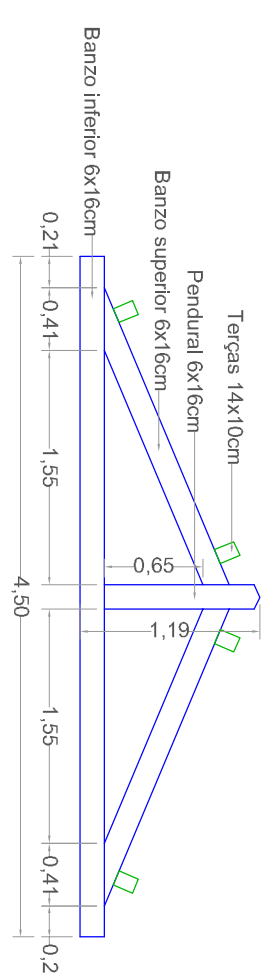
PERFIS TESOURAS T7, T9, T10 e T11
ESCALA - 1:5



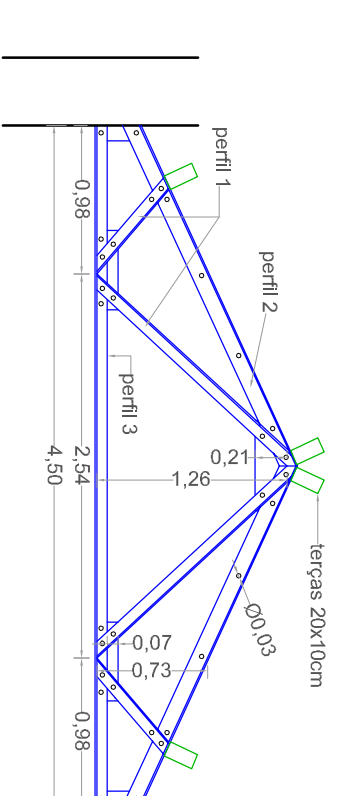
TESOURA T6
ESCALA - 1:50



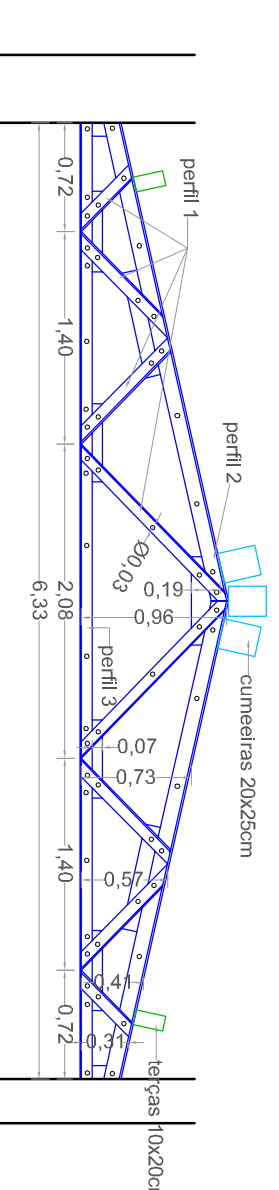
TESOURA T7
ESCALA - 1:50



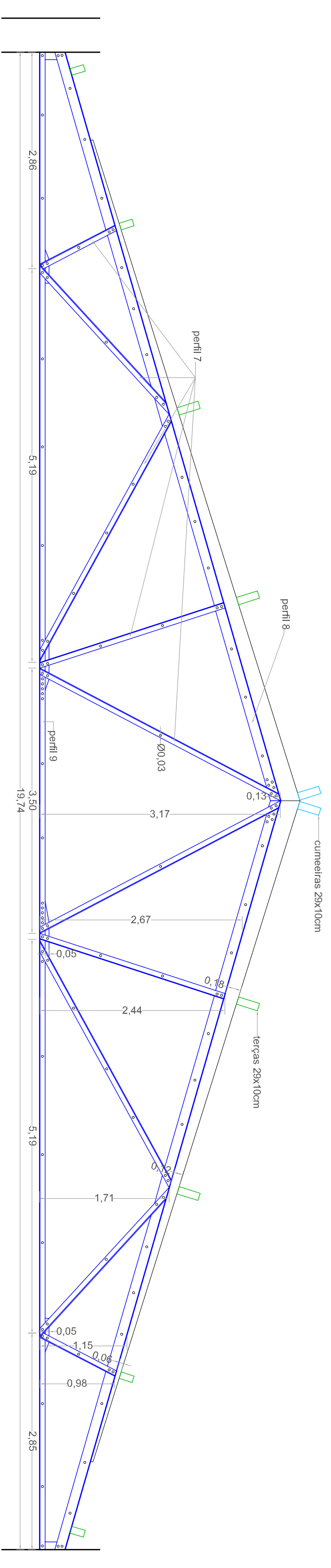
TESOURA T8
ESCALA - 1:50



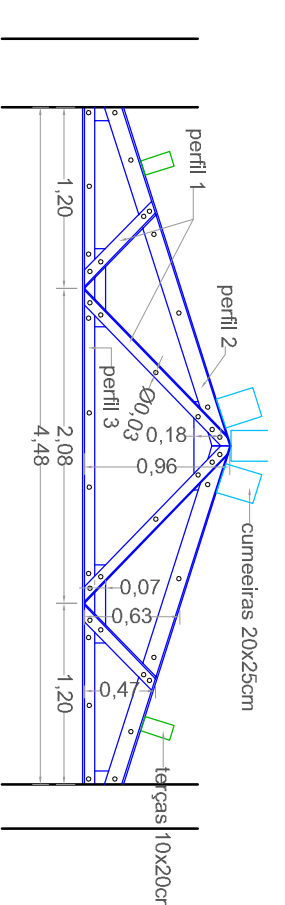
TESOURA T9
ESCALA - 1:50



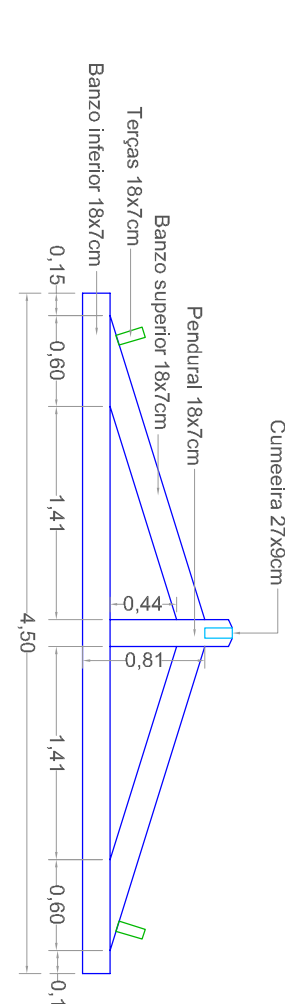
TESOURA T10
ESCALA - 1:50



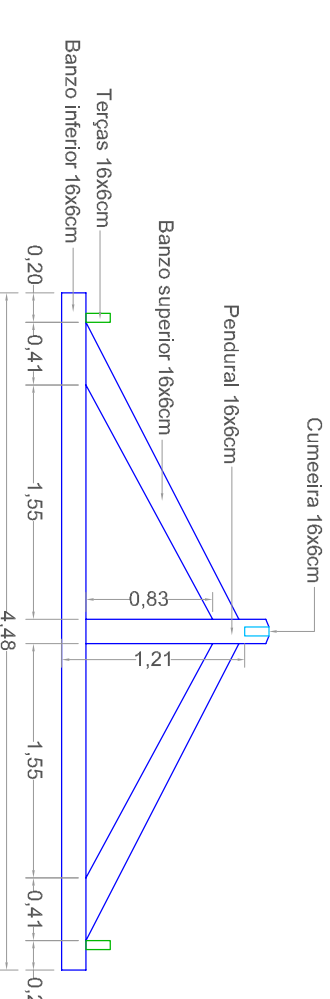
TESOURA T12
ESCALA - 1:50



TESOURA T11
ESCALA - 1:50



TESOURA T13
ESCALA - 1:50



TESOURA T14
ESCALA - 1:50



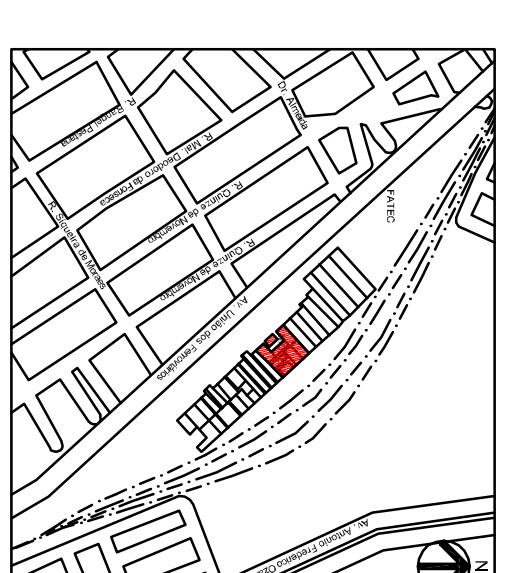
LOCALIZAÇÃO
SEM ESCALA

COMPLEXO EDUC. CIA PAULISTA
PRÓJETO EXECUTIVO DE RESTAURO

CLIENTE PREFEITURA MUNICIPAL DE JUNDIAÍ
LOCAL AVENIDA UNIO DOS FERROVIÁRIOS
FASE EXECUTIVO
ESCALA INDICADA DATA AGO/2012
REVISÃO

PROJETO Arq. Mª Vítória Fischer CAU 99080-2
COORDENADOR Arq. Mariana Passos CAU 124314-4
PROJETO Arq. Marcelo Pucci CAU 47359-6
DESENHO Arq. Marina Vilas CAU 86091-3

COBERTURA
LEVANTAMENTO MÉTRICO



SITUAÇÃO

VEC VEC ENGENHARIA E GESTÃO
Rua Manoel Mathias, nº 623
Edifício Comercial Sênica U.I. 4
Jundiaí - SP 13.204-000
Fone: (13) 3828 1860
www.vecengenharia.com.br
vec@vecengenharia.com.br