

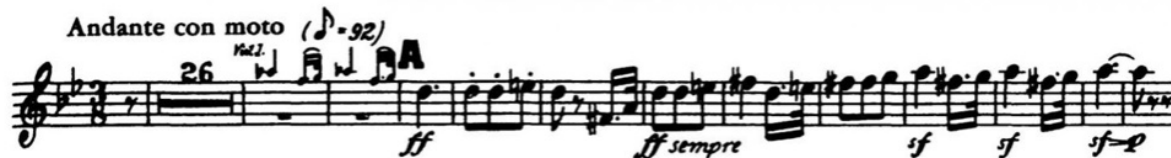
Beethoven: Symphony No.5 in C minor, op. 67

Andante con moto (♩ = 92)

In B flat



In C



In B flat



Bizet: Carmen (Opera Comique in 4 acts – Prelude)

ORIGINAL NOTATION

TROMBA I

in A.

Andante moderato. (♩ = 58.)

Nº 1. Prélude.

(Prelude to Act I)



Dvorak: Symphony No.8, in G Major, op.88

in C.

Poco meno mosso. Tempo I.

12 4 M 20

N Fag.

Rimsky-Korsakov: Scheherazade, op. 35

1. 5 6 7 8 8 3 3 4

sf *f*

f *p* *cresc.* *mf* *K*

p *f*

sf

Recit. Moderato assul. *rit. a tempo* *rit. a tempo* *rit. M* Allegro molto ed animato.

sf *Cud. ad lib.* 1 *Cud. ad lib.* 1 *Cud. ad lib.* in A. 20

Stravinsky: Petroushka Suite (III Quadro – Danse de la Ballerine)

in B \flat Solo r^{a} 134 Allegro, $\text{♩} = 118$ Solo

senza sord. *mf* *mf*

135 *p* *mf*

136 *p*

137

138